

## HiViSafe

Inspection system for high visibility clothing



### Conformity checking after washing

After washing the high visibility workwear, the HiViSafe system checks the quality and conformity of the garment's colour and reflective stripes. The system matches the garment's colour according to a reference standard and controls the state of the reflective stripes in terms of surface and reflectance.

The HiViSafe can inspect different garments: coats, trousers or coveralls, ...

#### Examples

Conform



Not conform

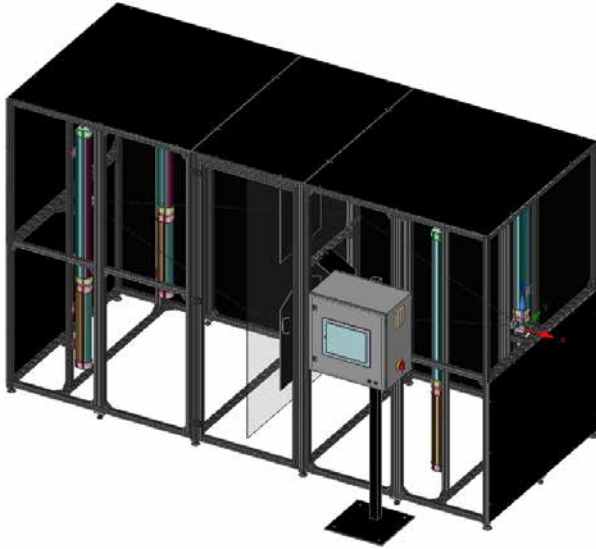


Conform



Not conform





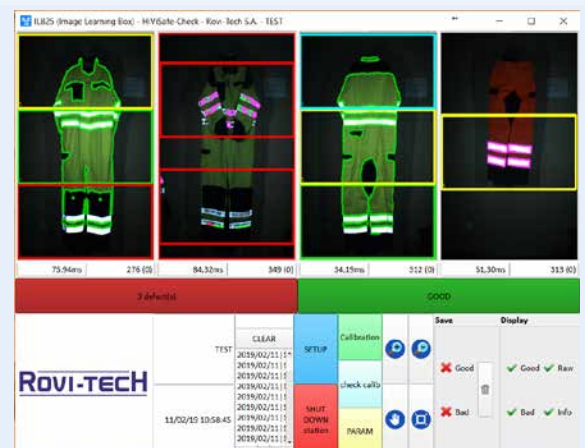
## Characteristics

- Industrial design ■
- Two cameras ■
- Industrial LED lighting (day/night) ■
- User tough screen ■
- Identification garment, barcode ■
- Manual or automatic system ■
- Approved by ■



## ILB-25 - ROVI-TECH vision platform

- Large library of inspection tools
- Calibration via Certified Standards
- Modular architecture
- Traceability of inspection results
- Production statistics
- Results management (database)



Yellow Standard

Orange Standard

## Services

- Pre-engineering ■
- Prototyping ■
- Engineering & Tests ■
- Installation ■
- Commissioning ■
- Maintenance Contract ■
- Hotline Service ■
- Training ■